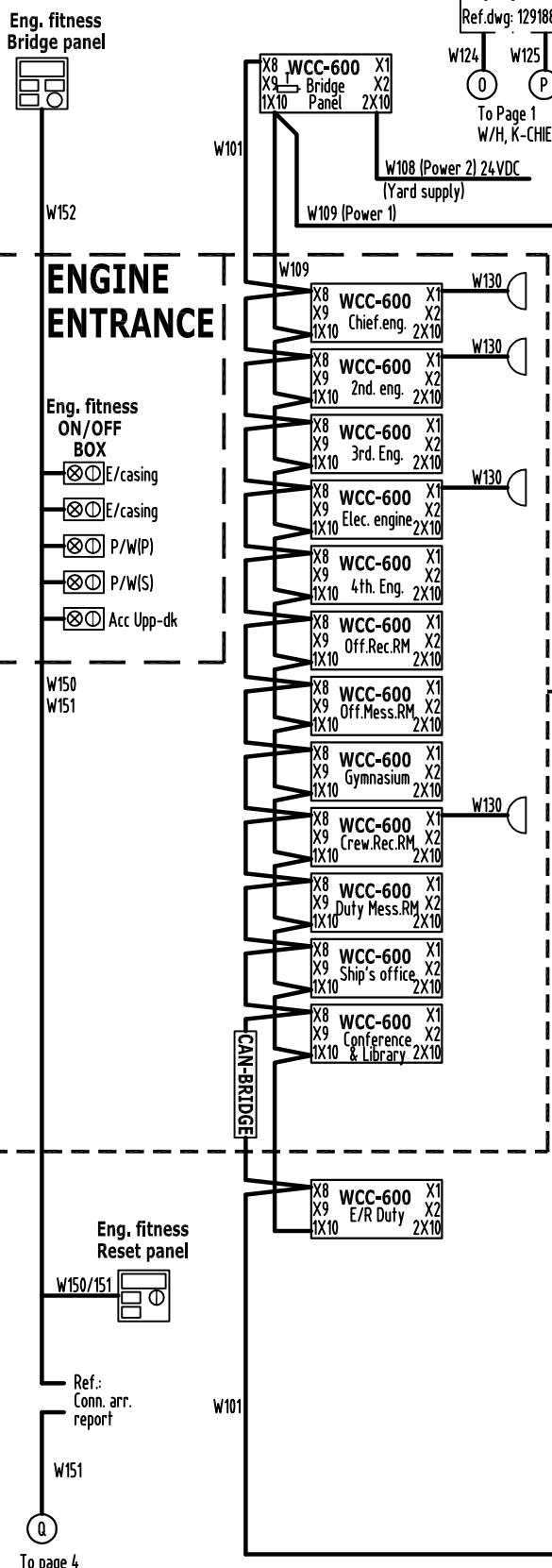


WHEELHOUSE CONSOLE



NOTE 1:
X10, voltage to each 24VDC consumer must be between 18-32V DC, MAX ±5% ripple, voltage loss in cables to be calculated by the customer. Ref. chapter 10 for fuse distribution and power consumption.

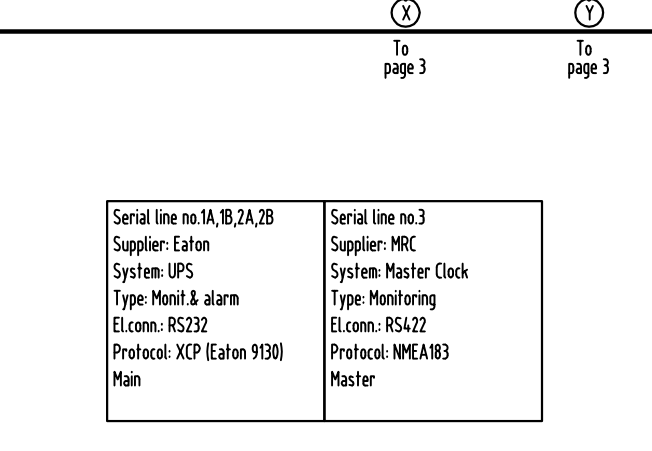
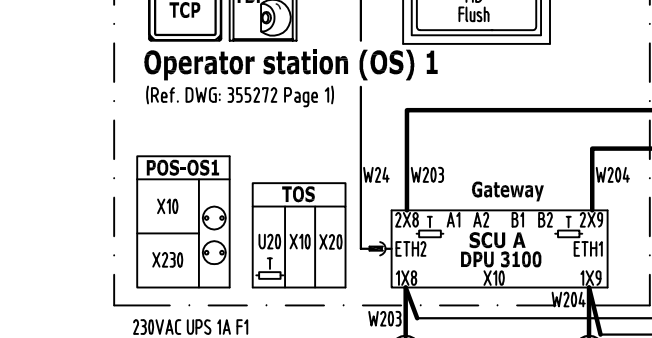
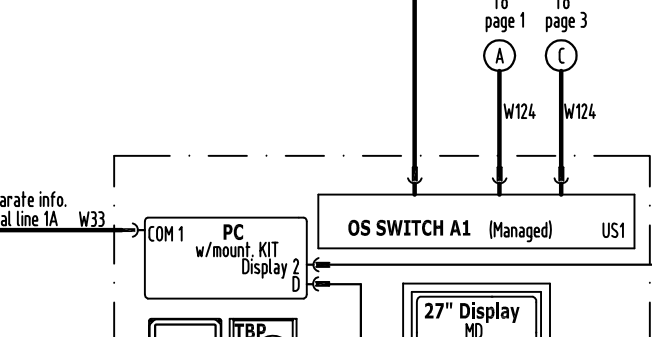
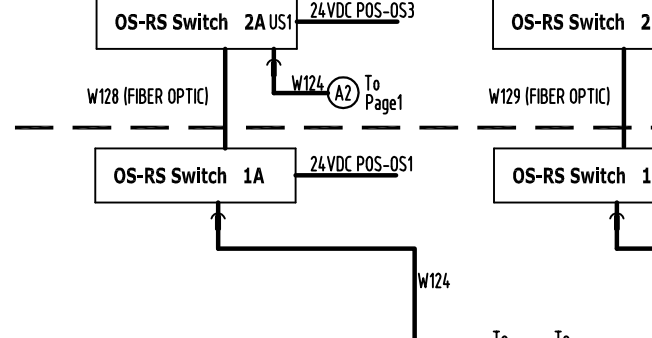
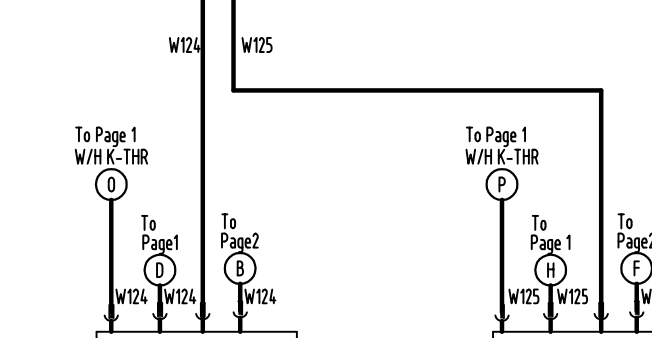
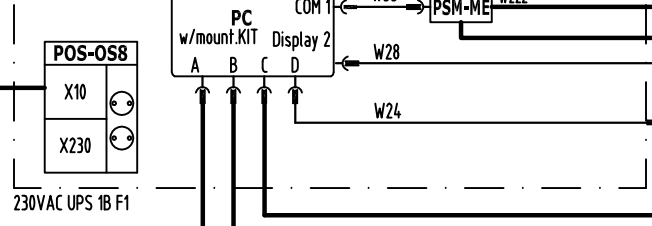
NOTE 2:
All bold cables and junction boxes are yard / other suppliers except cables marked W00-W099, Ref. cable list.

NOTE 3:
DPU's with control must have segregation in 24VDC supply.

NOTE 4:
CAN A & B in separate cables and different routings

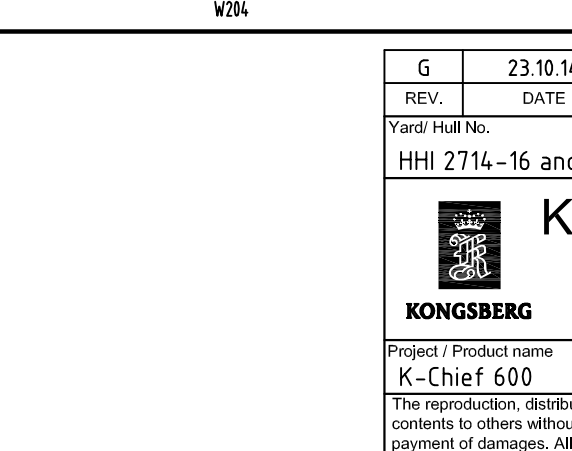
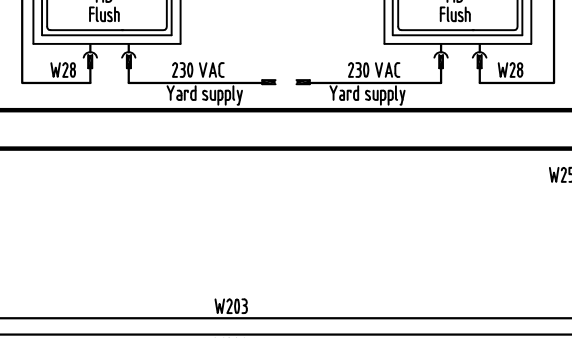
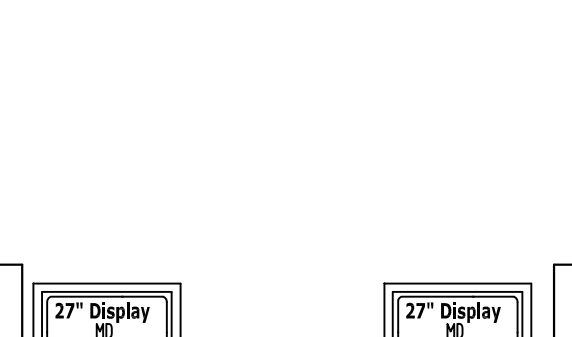
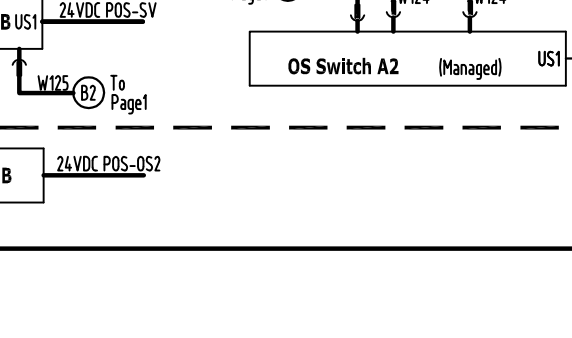
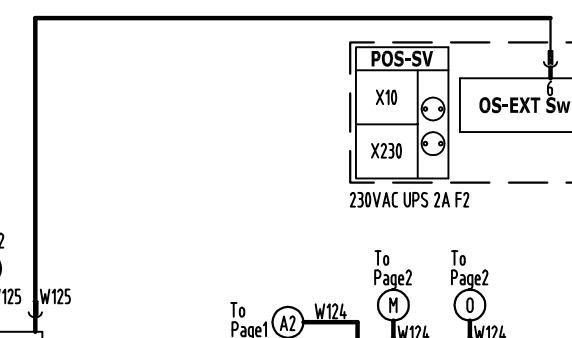
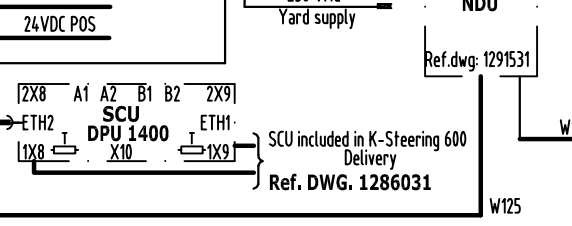
Operator station (OS) 8

(Ref. DWG: 355272 Page 3)



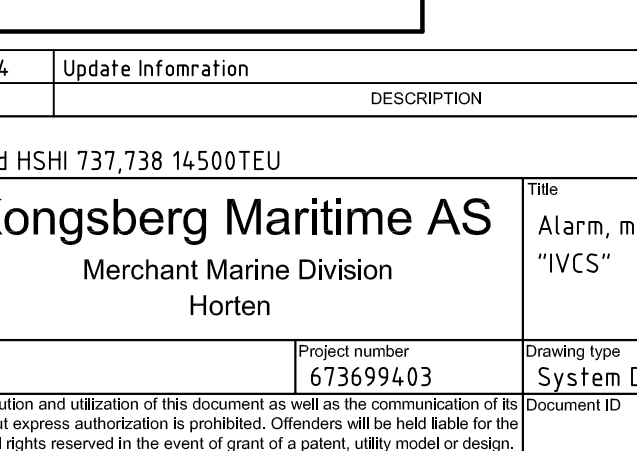
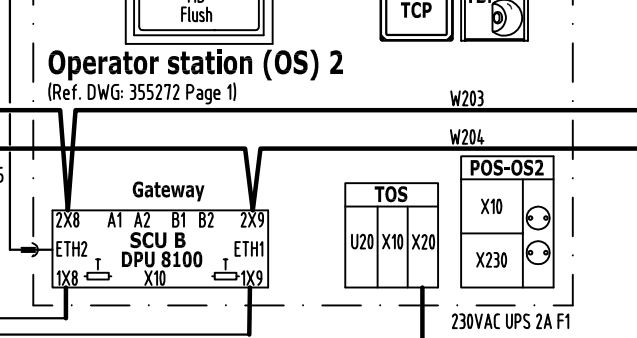
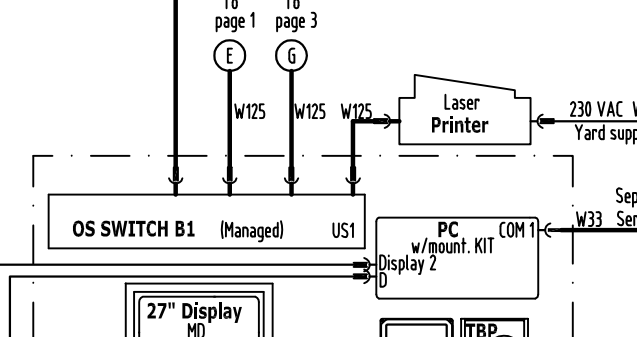
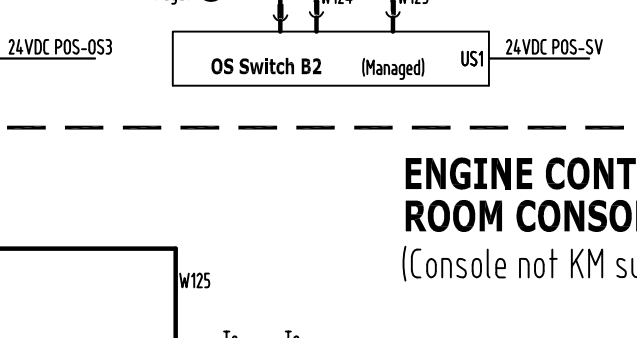
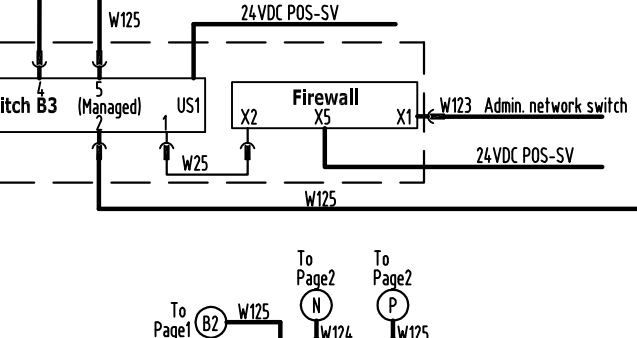
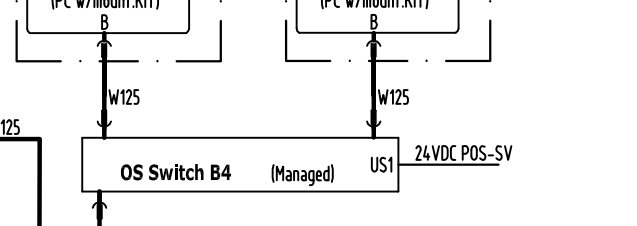
Operator station (OS) 2

(Ref. DWG: 355272 Page 1)

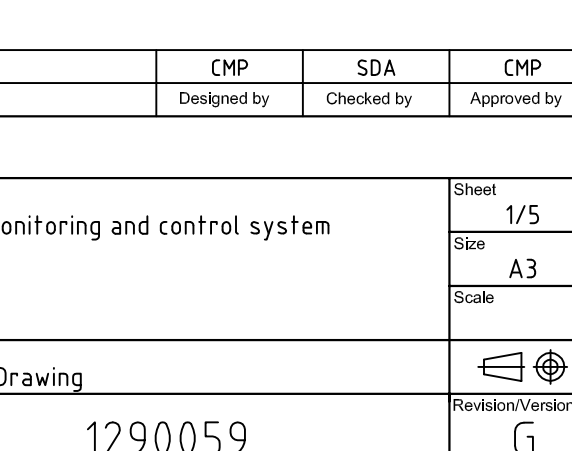
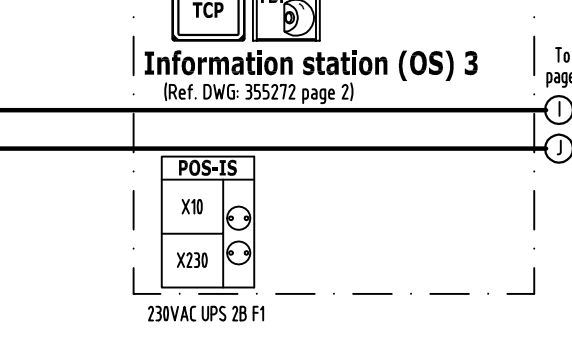
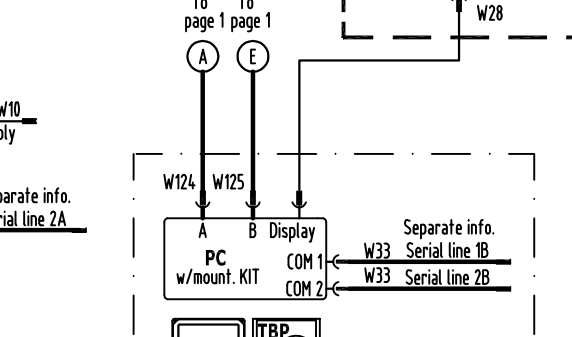
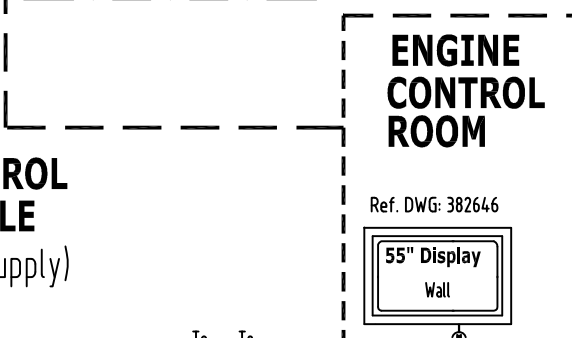
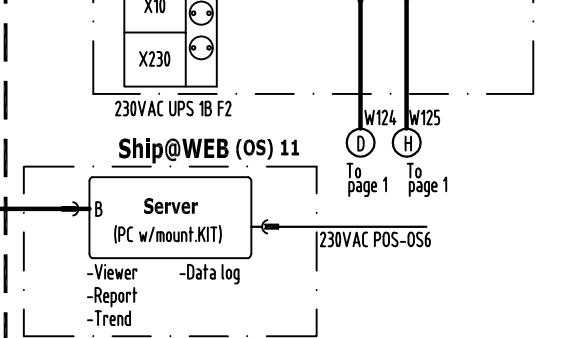
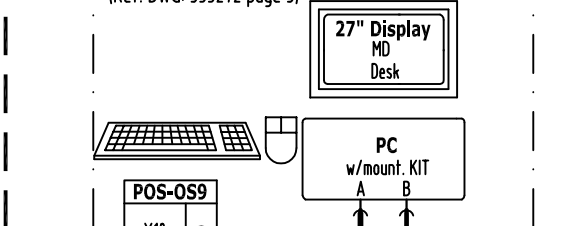


Operator station (OS) 9

(Ref. DWG: 355272 page 3)

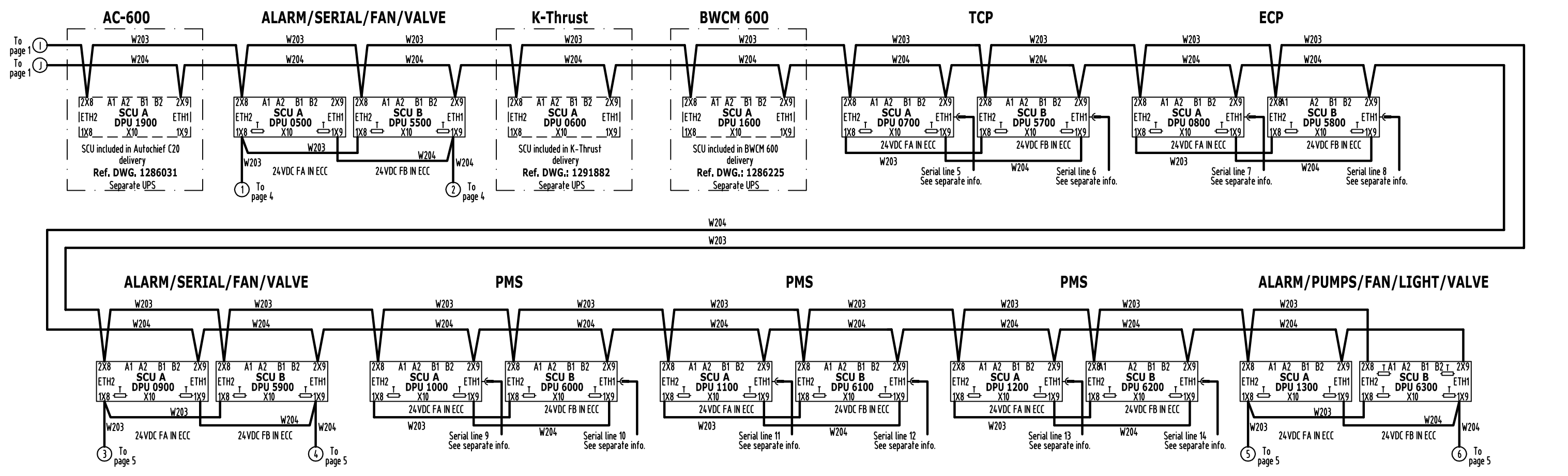
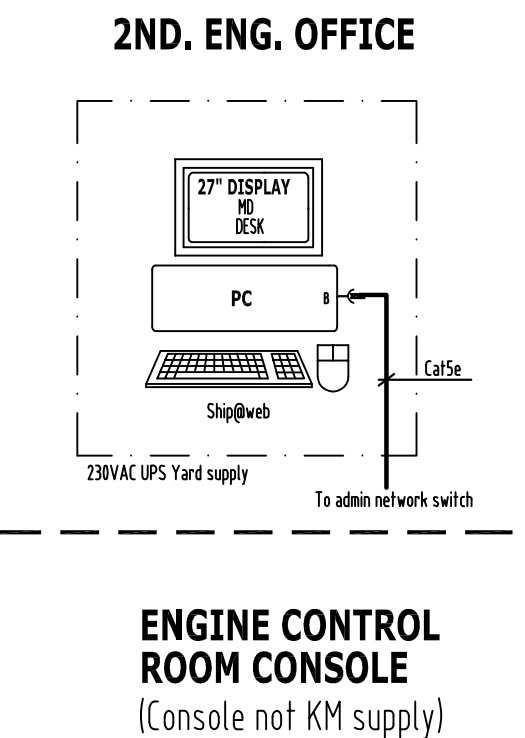
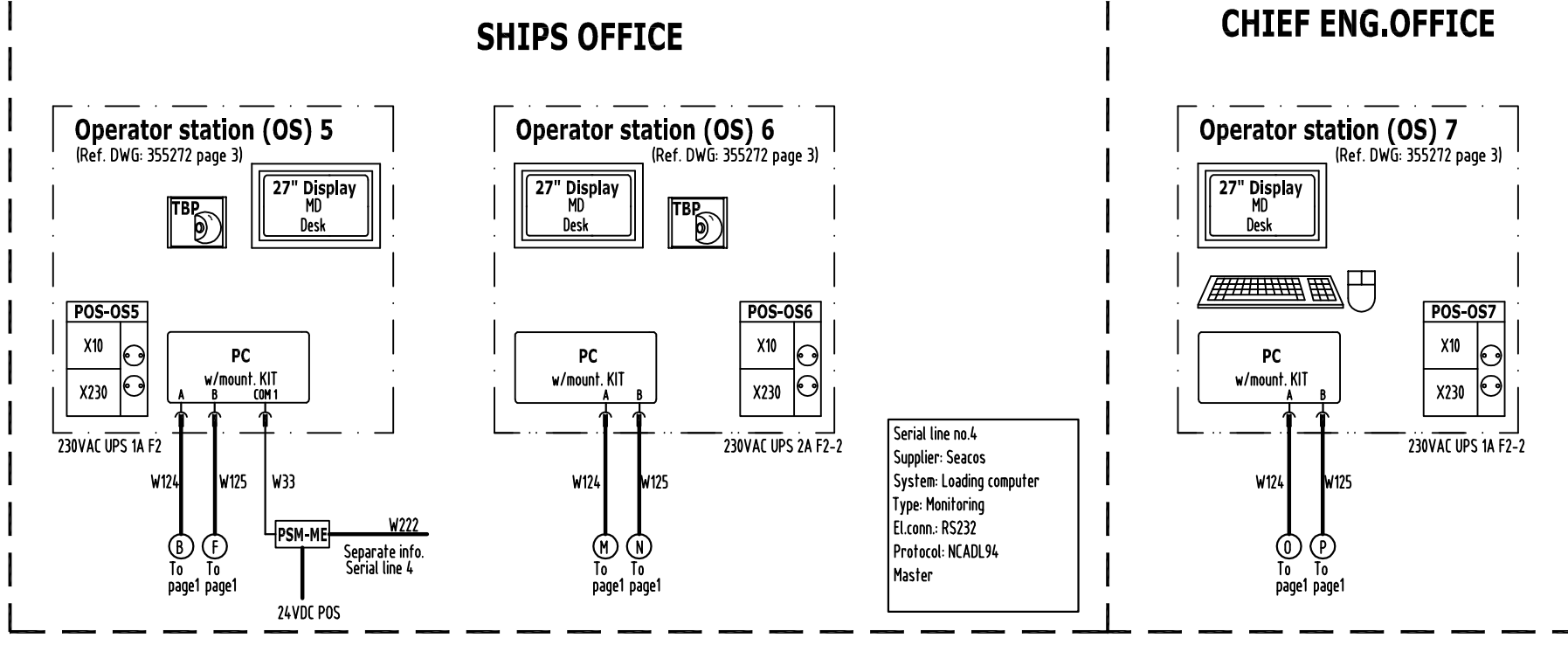
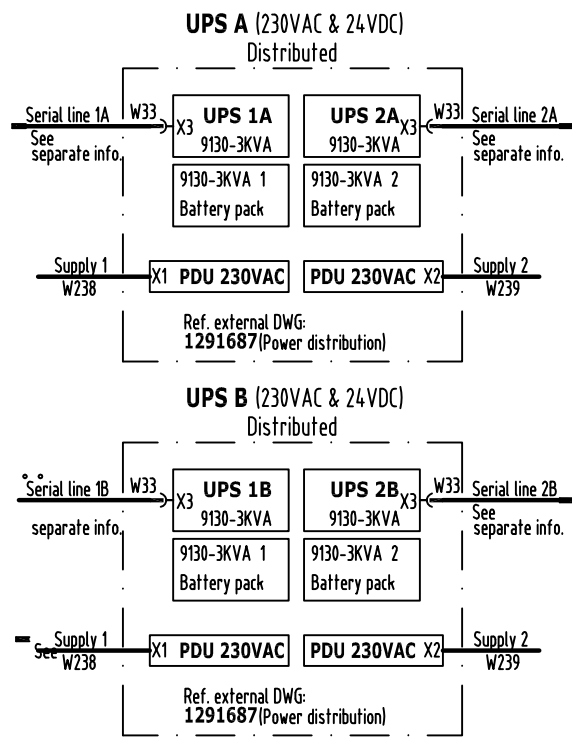


WHEELHOUSE Vessel Performance system



Serial line no.1A,1B,2A,2B Supplier: Eaton System: UPS Type: Monit. & alarm El.conn.: RS232 Protocol: XCP (Eaton 9130) Main	Serial line no.3 Supplier: MRC System: Master Clock Type: Monitoring El.conn.: RS422 Protocol: NMEA183 Master
---	---

G	23.10.14	Update Information	CMP	SDA	CMP
REV.	DATE	DESCRIPTION	Designed by	Checked by	Approved by
Yard/ Hull No. HHI 2714-16 and HSHI 737,738 14500TEU					
KONGSBERG		Kongsberg Maritime AS Merchant Marine Division Horten		Title Alarm, monitoring and control system "IVCS"	
Project / Product name K-Chief 600		Project number 673699403		Sheet 1/5	
The reproduction, distribution and utilization of this document as well as the communication of its contents to others without express authorization is prohibited. Offenders will be held liable for the payment of damages. All rights reserved in the event of grant of a patent, utility model or design.		Drawing type System Drawing		Size A3	
© Kongsberg Maritime 2008		Document ID 1290059		Scale	
				Revision/Version G	



Serial line no.5 Supplier: Mitsubishi System: Turbine cont. Type: Alarm/Mon./Control El.conn.: TCP/IP Protocol: Modbus IP:192.168.100.75 Port:502 Main	Serial line no.6 Supplier: Mitsubishi System: Turbine cont. Type: Alarm/Mon./Control El.conn.: TCP/IP Protocol: Modbus IP:192.168.101.75 Port:503 Backup	Serial line no.7 Supplier: Alfalaval System: Economizer cont. Type: Alarm/Mon./Control El.conn.: TCP/IP Protocol: Modbus IP:192.168.066 Port:2001 Main	Serial line no.8 Supplier: Alfalaval System: Economizer cont. Type: Alarm/Mon./Control El.conn.: TCP/IP Protocol: Modbus IP:192.168.067 Port:2002 Backup	Serial line no.9 Supplier: Siemens System: PMS Type: Alarm/Mon./Control El.conn.: TCP/IP Protocol: Modbus IP:192.168.060 Port:501 Main	Serial line no.10 Supplier: Siemens System: PMS Type: Alarm/Mon./Control El.conn.: TCP/IP Protocol: Modbus IP:192.168.063 Port:504 Backup
Serial line no.11 Supplier: Siemens System: PMS Type: Alarm/Mon./Control El.conn.: TCP/IP Protocol: Modbus IP:192.168.062 Port:501 Main	Serial line no.12 Supplier: Siemens System: PMS Type: Alarm/Mon./Control El.conn.: TCP/IP Protocol: Modbus IP:192.168.064 Port:504 Backup	Serial line no.13 Supplier: Siemens System: PMS Type: Alarm/Mon./Control El.conn.: TCP/IP Protocol: Modbus IP:192.168.063 Port:501 Main	Serial line no.14 Supplier: Siemens System: PMS Type: Alarm/Mon./Control El.conn.: TCP/IP Protocol: Modbus IP:192.168.063 Port:504 Backup		

G	24.10.14	Update information	CMP	SDA	CMP
REV.	DATE	DESCRIPTION	Designed by	Checked by	Approved by
Yard/ Hull No. HHI 2714-16 and HSHI 737,738 14500TEU					
KONGSBERG		Kongsberg Maritime AS Merchant Marine Division Horten		Title Alarm, monitoring and control system "IVCS"	
Project / Product name K-Chief 600		Project number 673699403		Drawing type System Drawing	
The reproduction, distribution and utilization of this document as well as the communication of its contents to others without express authorization is prohibited. Offenders will be held liable for the payment of damages. All rights reserved in the event of grant of a patent, utility model or design.				Document ID 1290059	
© Kongsberg Maritime 2008				Revision/Version G	

Sheet	2/5
Size	A3
Scale	

VESSEL PERFORMANCE SYSTEM (VPS)

ENGINE CONTROL ROOM

ENGINE ROOM

CODEWHEEL 1
NQ-032/-

CODEWHEEL 2
NQ-032/-

Operator station (OS) 4

(Ref. DWG: 355272 page 3)

27" Display
MD
Desk

POS-OS4
X10
X230

230VAC UPS 2B F2

PC
w/mount. KIT

To page 1
To page 1

TO PAGE 4

W402*

MAIN ENGINE

NQB101
FORK 1

NQB101
FORK 2

W90

W90

X1 FORK 1
UG-920 FORK 2

Note:
Distance between Code Wheels
4 m +/- 1 m

A/E ROOM

MOVEABLE PRESSURE TRANSMITTER, GT-26

NO.1
A/E-CABINET

SIUxe
DPU 1520
X10 X1

2 DPU CABINET
(KM SUPPLY)
Ref. dwg. HA452722
Location: A/E Room PORT

NO.2
A/E-CABINET

SIUxe
DPU 1521
X10 X1

2 DPU CABINET
(KM SUPPLY)
Ref. dwg. HA452722
Location: A/E Room STBD

UG-930

UG-930

UG-930

UG-930

TDC PICKUP
A/E 1

TDC PICKUP
A/E 2

TDC PICKUP
A/E 3

TDC PICKUP
A/E 4

3 pairs 0.75 mm2 TWISTED with Common Braided Screen
YARD SUPPLY

3 pairs 0.75 mm2 TWISTED with Common Braided Screen
YARD SUPPLY

3 pairs 0.75 mm2 TWISTED with Common Braided Screen
YARD SUPPLY

3 pairs 0.75 mm2 TWISTED with Common Braided Screen
YARD SUPPLY

W89

10 m KM SUPPLY

10 m KM SUPPLY

10 m KM SUPPLY

10 m KM SUPPLY

Serial line no.15
Supplier: MAN B&W
System: M/E PMI
Type: Alarm/Monit.
El.conn.: TCP/IP
Protocol: Modbus
Master

NOTE 1:

X10, VOLTAGE TO EACH 24VDC CONSUMER MUST BE BETWEEN 18-32V DC, MAX ±5% RIPPLE, VOLTAGE LOSS IN CABLES TO BE CALCULATED BY THE CUSTOMER REF.CHAPTER 10 FOR FUSE DISTRIBUTION AND POWER CONSUMPTION.

NOTE 2:


ALL BOLD CABLES AND JUNCTION BOXES ARE YARD / OTHER SUPPLIERS EXCEPT CABLES MARKED W00-W099, REF. CABLE LIST.

NOTE 3:

DPU's WITH CONTROL MUST HAVE SEGREGATION IN 24VDC SUPPLY

NOTE 4:

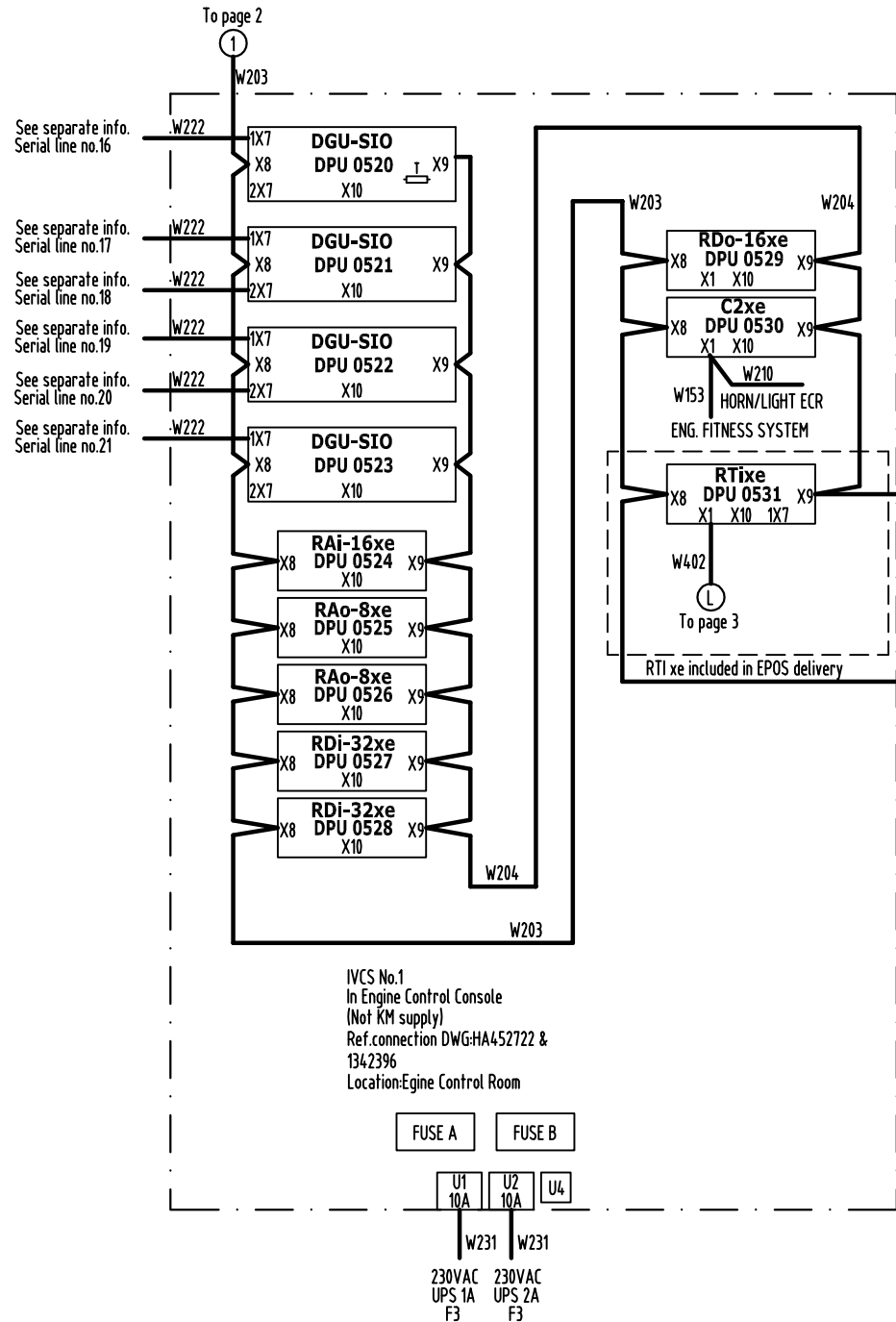
CAN A & B IN SEPARATE CABELS AND DIFFERENT ROUTINGS

G	24.10.14	Update Information	SJK	CMP	SDA
REV.	DATE	DESCRIPTION	Designed by	Checked by	Approved by
Yard/ Hull No. HHI 2714-16 and HSHI 737,738 14500TEU					
 KONGSBERG		Kongsberg Maritime AS Merchant Marine Division Horten		Title Alarm, monitoring and control system "IVCS"	
Project / Product name K-Chief 600		Project number 673699403		Sheet 3/5	
The reproduction, distribution and utilization of this document as well as the communication of its contents to others without express authorization is prohibited. Offenders will be held liable for the payment of damages. All rights reserved in the event of grant of a patent, utility model or design.				Drawing type System Drawing	
Document ID 1290059				Scale A3	
© Kongsberg Maritime 2008				Revision/Version G	

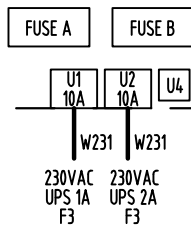
ENGINE CONTROL ROOM

(Console not KM supply)

ALARM
(ALARMS / SERIAL LINES / EPOS)



IVCS No.1
In Engine Control Console
(Not KM supply)
Ref.connection DWG:HA452722 &
1342396
Location:Engine Control Room



Serial line no.16 Supplier: Dong Hwa System: Energy Saving System Type: Monit.& control El.conn.: RS485 Protocol: Modbus RTU Master	Serial line no.17 Supplier: PANASIA System: BWTS Type: Monit.& control El.conn.: RS485 Protocol: Modbus Master	Serial line no.18-21 Supplier: HHI System: No.1-4 G/E Monitoring Type: Monit.& alarm El.conn.: RS485 Protocol: Modbus Master
---	--	--

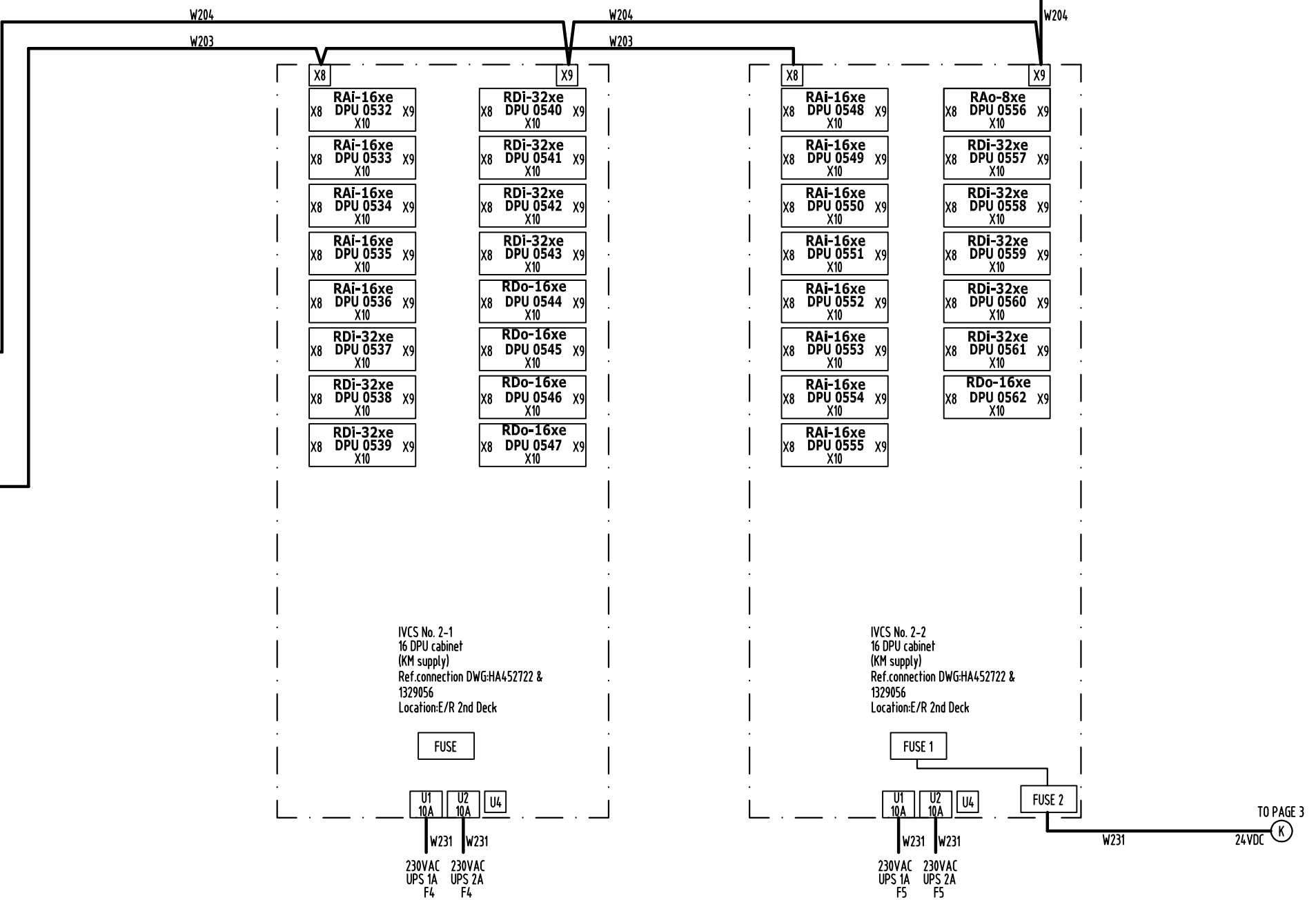
- NOTE 1:**
X10, voltage to each 24VDC consumer must be between 18-32V DC,
MAX ±5% ripple, voltage loss in cables to be calculated by the customer
Ref.chapter 10 for fuse distribution and power consumption.
- NOTE 2:**
All bold cables and junction boxes are yard / other suppliers except cables marked W00-W099,
Ref. cable list.
- NOTE 3:**
DPU's with control must have segregation in 24VDC supply.
- NOTE 4:**
CAN A & B in separate cables and different routings

Refer to Note 4 in left corner

ENGINE ROOM

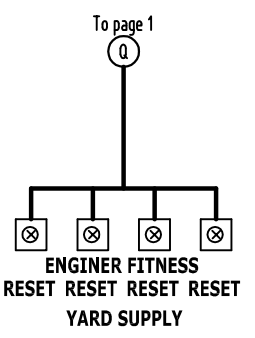
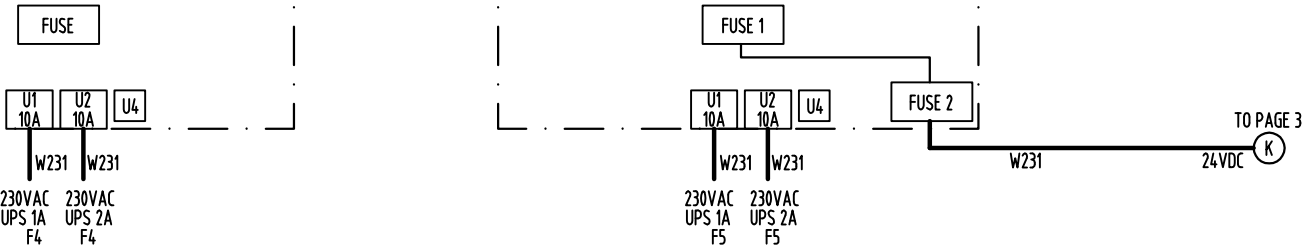
ALARM
(ALARMS / SERIAL)

ALARM & CONTROL
(ALARMS / FAN / VALVE)



IVCS No. 2-1
16 DPU cabinet
(KM supply)
Ref.connection DWG:HA452722 &
1329056
Location:E/R 2nd Deck

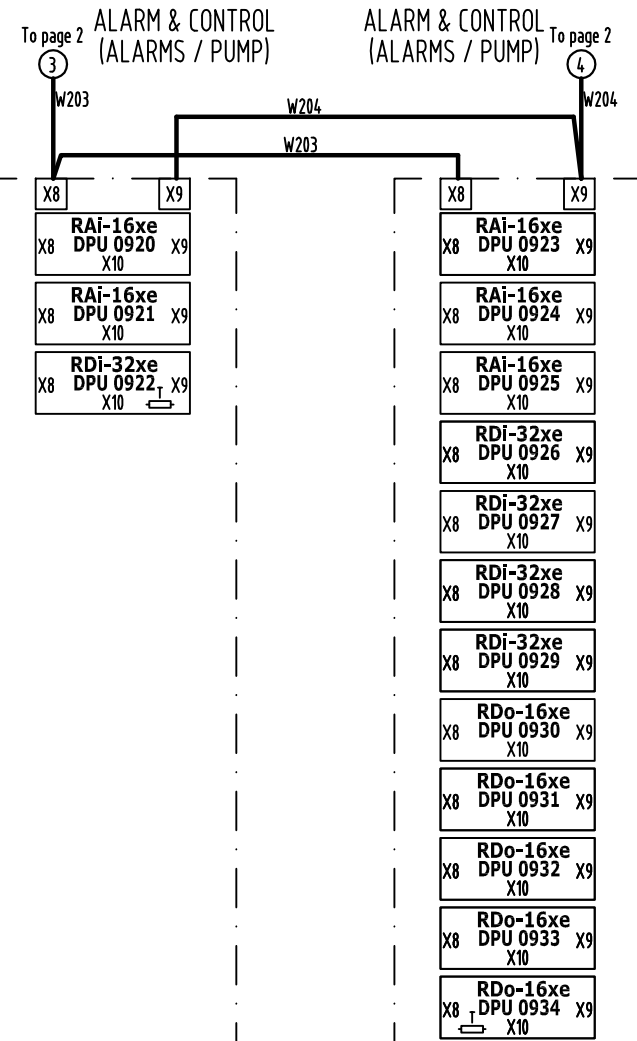
IVCS No. 2-2
16 DPU cabinet
(KM supply)
Ref.connection DWG:HA452722 &
1329056
Location:E/R 2nd Deck



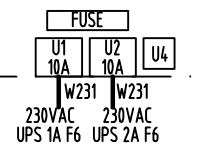
G	24.10.14	Update Information	CMP	SDA	CMP
REV.	DATE	DESCRIPTION	Designed by	Checked by	Approved by
Yard/ Hull No. HHI 2714-16 and HSHI 737,738 14500TEU					
KONGSBERG		Kongsberg Maritime AS Merchant Marine Division Horten		Title Alarm, monitoring and control system "IVCS"	
Project / Product name K-Chief 600		Project number 673699403		Drawing type System Drawing	
The reproduction, distribution and utilization of this document as well as the communication of its contents to others without express authorization is prohibited. Offenders will be held liable for the payment of damages. All rights reserved in the event of grant of a patent, utility model or design.				Document ID 1290059	
© Kongsberg Maritime 2008				Revision/Version G	

Sheet	4/5
Size	A3
Scale	

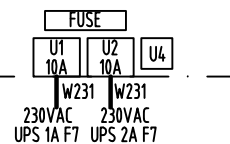
ENGINE ROOM



IVCS No. 3-1
16 DPU cabinet
(KM supply)
Ref.connection DWG:HA452722 & 1329056
Location:Under Accom. Deck



IVCS No. 3-2
16 DPU cabinet
(KM supply)
Ref.connection DWG:HA452722 & 1329056
Location:Under Accom. Deck



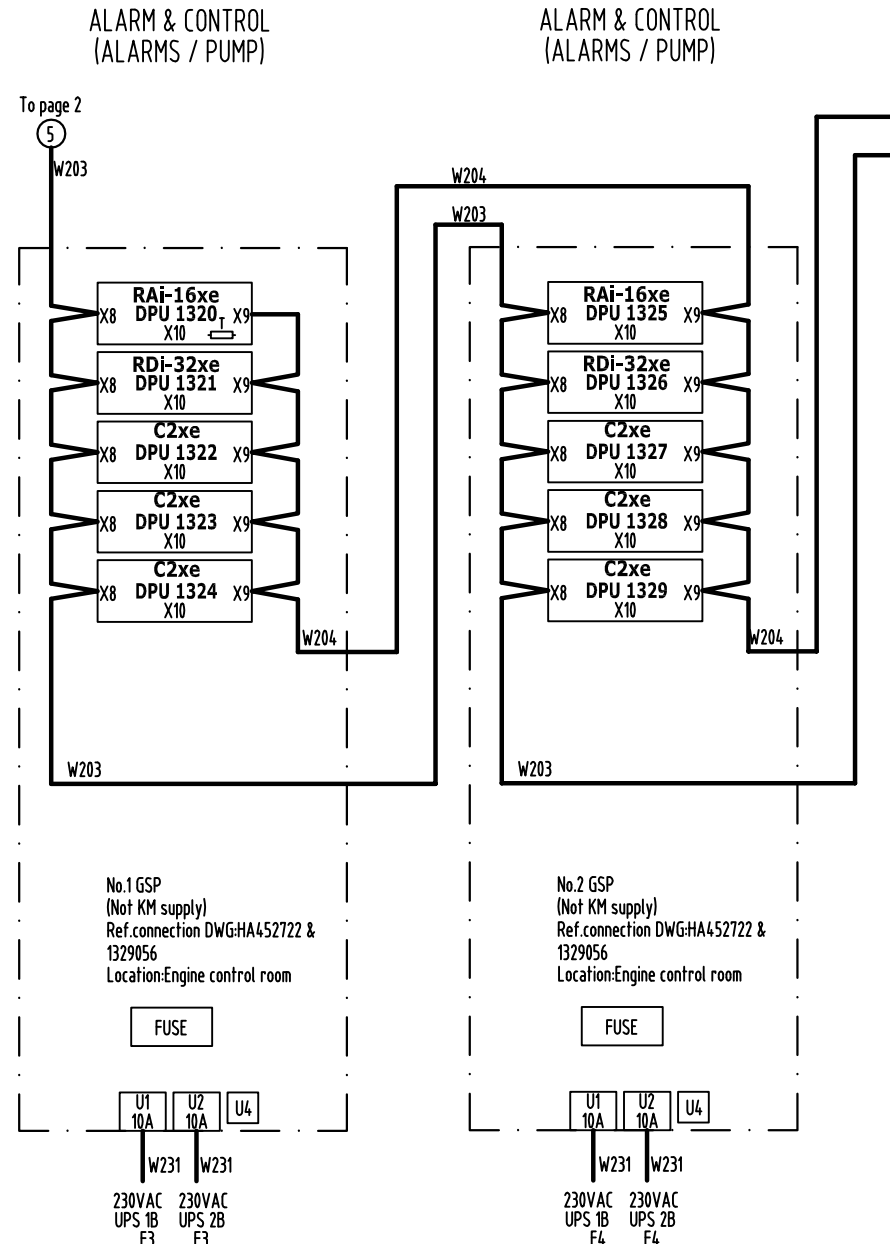
NOTE 1:
X10, voltage to each 24VDC consumer must be between 18-32V DC,
MAX ±5% ripple, voltage loss in cables to be calculated by the customer
Ref.chapter 10 for fuse distribution and power consumption.

NOTE 2:
All bold cables and junction boxes are yard / other suppliers except cables marked W00-W099,
Ref. cable list.

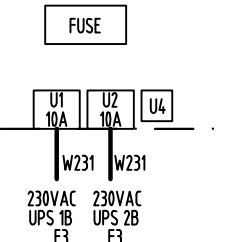
NOTE 3:
DPUs with control must have segregation in 24VDC supply.

NOTE 4:
CAN A & B in separate cabels and different routings

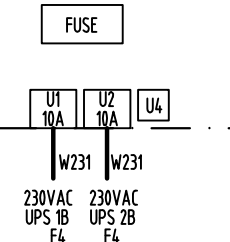
ENGINE CONTROL ROOM



No.1 GSP
(Not KM supply)
Ref.connection DWG:HA452722 & 1329056
Location:Engine control room

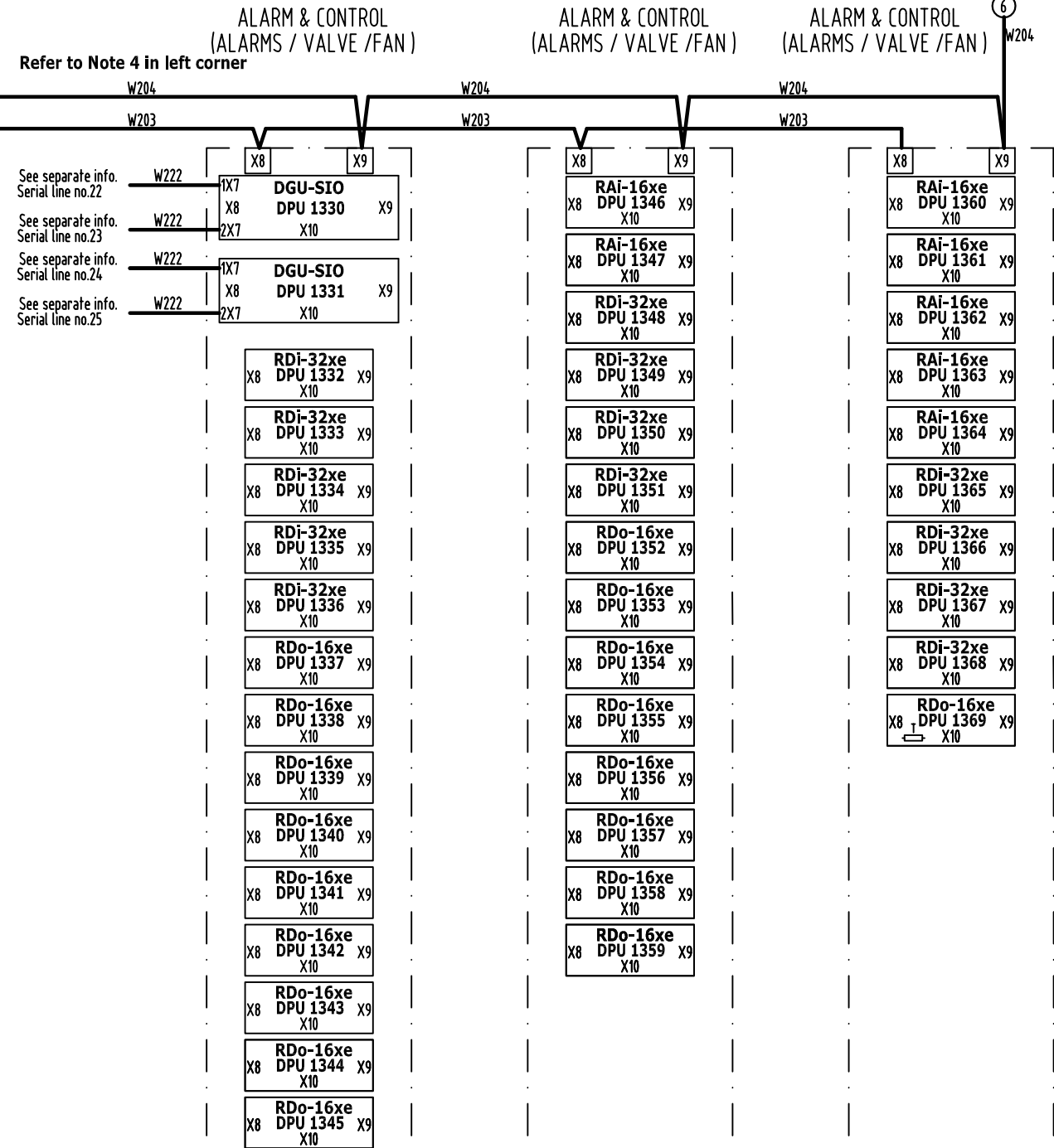


No.2 GSP
(Not KM supply)
Ref.connection DWG:HA452722 & 1329056
Location:Engine control room



Serial line no.22 Supplier: HI-AIR System: HA-V, Air cond. system Type: Monit. El.conn.: RS485 Protocol: Modbus RTU Master	Serial line no.23 Supplier:Consillium System: Fire Detection System Type: Monit. El.conn.: RS485 Protocol: Modbus RTU Master	Serial line no.24 Supplier: Light Structure System: Hull stress monit.sys Type: Monit. El.conn.: RS422 Protocol: Modbus RTU Master	Serial line no.25 Supplier: Interschalt System: Bluetracker Type: Monit. El.conn.: RS485 Protocol: Modbus RTU Slave
--	--	--	---

UNDER ACCOMMODATION DECK



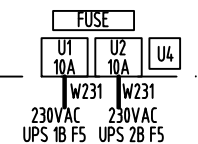
See separate info.
Serial line no.22

See separate info.
Serial line no.23

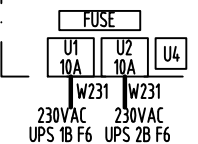
See separate info.
Serial line no.24

See separate info.
Serial line no.25

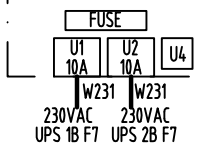
IVCS No. 4-1
16 DPU cabinet
(KM supply)
Ref.connection DWG:HA452722 & 1329056
Location:Under Accom. Deck



IVCS No. 4-2
16 DPU cabinet
(KM supply)
Ref.connection DWG:HA452722 & 1329056
Location:Under Accom. Deck



IVCS No. 4-3
16 DPU cabinet
(KM supply)
Ref.connection DWG:HA452722 & 1329056
Location:Under Accom. Deck



G	24.10.14	Update Information	CMP	SDA	CMP
REV.	DATE	DESCRIPTION	Designed by	Checked by	Approved by
Yard/ Hull No. HHI 2714-16 and SHI 737,738 14500TEU					
KONGSBERG		Kongsberg Maritime AS Merchant Marine Division Horten		Title Alarm, monitoring and control system "IVCS"	
Project / Product name K-Chief 600		Project number 673699403		Sheet 5/5	
The reproduction, distribution and utilization of this document as well as the communication of its contents to others without express authorization is prohibited. Offenders will be held liable for the payment of damages. All rights reserved in the event of grant of a patent, utility model or design.		Drawing type System Drawing		Size A3	
© Kongsberg Maritime 2008		Document ID 1290059		Scale	
				Revision/Version G	